



## Over 40 years of expertise in plastic injection moulding



**Riverjars** are designed and manufactured by River Packaging Ltd. We are dedicated to providing you with a cost effective quality product.

We supply Standard ranges of plastic jars and also offer a full bespoke design and mould making service to support customer specific requirements.

River supply from single pallets of jars upwards, made to order. For small quantities or single boxes please ask us about our distributor network.

**Riverjars** are used in many industries, including:  
Automotive, sport and leisure, equine, aquatics, veterinary, pharmaceutical, beauty, healthcare, cosmetics and toiletries.

### **Riverjars** offer a comprehensive range of standard jars:

- ▶ **Screw Cap Jars**
- ▶ **Tamper Evident Jars**
- ▶ **Cosmetic Jars**

### **Additional services include:**

- ▶ **Coloured jars with modest minimum order quantities**
- ▶ **Colour matching**
- ▶ **In mould labelling / decoration**
- ▶ **Screen printing**
- ▶ **Turnkey bespoke product design & production**



River are proudly committed to our Environmental policy & ongoing continuous improvement beyond basic requirements. Substantial advances have been achieved through actions such as working with customer, suppliers, minimisation of waste, recycling, energy efficiency equipment. Our products are clearly marked to aid consumer recycling.

River Packaging Limited  
61 Windmill Road,  
Sunbury-on-Thames,  
Middlesex, TW16 7DT, UK

Product quality has always been at the heart of our business, monitored through ISO9001 Quality Management System.



## Screw Cap Jars

Range of screw lid PP plastic jars - sizes from 150ml to 1750ml.

### Available with the following options:

- ▶ Smooth Lid or Ribbed Lid style - S/R on table below
- ▶ Plain Lid or Wadded (lined) Lids
- ▶ 3 types of Wads available: white 'Alphaseal' plastic coated card, Induction Heat Seal (silver foil), EPE foam (special order)
- ▶ All Jars and Lids are available in white/natural as standard
- ▶ Colours are subject to a minimum order quantity
- ▶ High Clarity Polypropylene is available as an alternative to PET.
- ▶ Multi-colour screen-printing is available on all sizes.
- ▶ In Mould labeling available on selected jars.

Square base **SB** profile available as an alternative to Radius base **RB** profile on some sizes, please see chart.



Size (ml)	Ext. Neck Diameter (mm)	Height (mm)	Brimful Volume (ml)	Lid Size (mm)
50	50	34	60	55 S/R
100	58	52	125	63 S/R
150	67	54	164	70 S/R
250	67	82	255	70 S/R
275 SB	67	84	282	70 S/R
400	95	63	408	100 S/R
500 RB/SB	95	81	525	100 S/R
650 RB/SB	95	102	665	100 S/R
800	95	124	815	100 S/R
1000	107	129	1035	115 R
1250 RB/SB	107	158	1260	115 R
1750	123	165	1820	130 R

## Tamper Evident Jars



Our tamper evident jars incorporate a lid with a tamper evident tear band.

Its removal is a clear indication that the jar may have been opened.

- ▶ The tamper evident lid has a bore seal to provide a good seal and maintain product integrity
- ▶ The bore seal eliminates the need for a wad/liner, thus minimising the overall cost
- ▶ All sizes are available in white/natural as standard. Other colours are available as required
- ▶ We also produce these plastic jars in high-clarity PP, as an alternative to PET



We offer two different base types to many of our jars - **ROUND BASE** or **SQUARE BASE**.

Size (ml)	Ext. Neck Diameter (mm)	Height (mm)	Brimful Volume (ml)	Lid Size (mm)
150	58	73	165	63
250	57	82	255	70
250	75	82	320	80
500	90	106	590	95
500	97	81	570	100
700 SB	97	107	730	100
800 SB	97	122	840	100
1000	107	129	1035	115
1250 SB	107	158	1260	115

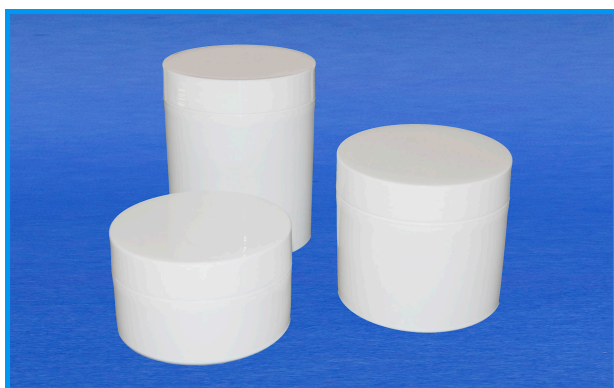
## Body Butter / Cream Jars



The Cream Jar has an integral bore seal. In mould labelling available on the Lid.

Size (ml)	Ext. Neck Diameter (mm)	Height (mm)	Brimful Volume (ml)	Lid Size (mm)
250	100	42	290	105

## Cosmetic Jars



Both Jars and Lids are made from Polypropylene. All sizes are available in white and natural as standard. Other colours are available subject to minimum order quantities. We also produce our Jars in high clarity PP, as an alternative to PET.

Size (ml)	Ext. Neck Diameter (mm)	Height (mm)	Brimful Volume (ml)	Lid Size (mm)
200 edge	86	47	260	90
300	77	74	365	84
350 edge	86	71	420	90
500 edge	86	97	520	90